

# STIHome+ – Single Server Installation

---

## Notes

The instructions below are applicable for a single server configuration, in which a single Windows Server acts as both the data and Web server.

### Server Prerequisites

- Windows Server 2003 Operating system (32 bit)
- IIS 6.0 with ASP.NET and FrontPage 2002 Server extensions
- Microsoft .Net Framework v.1.1.4322
- Server must meet Hardware Specifications, which are available for viewing on the STI Web site.

Please contact STI support for assistance with installation on a Windows 2000 Web server.

---

## Server Preparation

Please refer to the Hardware Specifications on the STI Support Web site at <http://support.sti-k12.com/documentation/hardwarespecs.asp> to ensure the server meets minimum hardware requirements.

The *Application Server Role* for the Web site must be installed and functioning properly.

To add the Application Server Role, perform the following steps:

- Navigate to the *Manage Your Server* wizard under the *Start* menu.
- Click **Add a Role** and select **Application Server Role** from the list.
- During the installation of this role, the user will be prompted to install *ASP.NET* and *FrontPage Extensions*. Choose both of these options.

---

## Downloading the Installation File

Download the most current version of STI Home Plus.

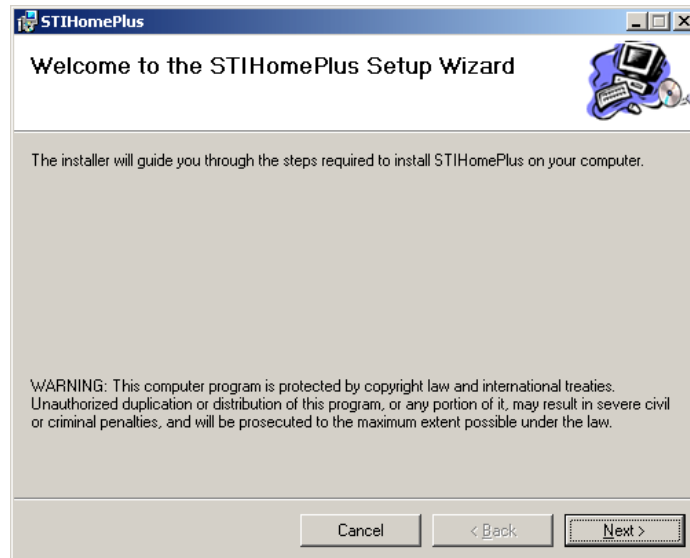
- Go to [www.sti-k12.com](http://www.sti-k12.com) and click **Support**.
- Click **Updates**. Enter *User Name* and *Password* in the spaces provided. To request a login, contact STI at 1-800-844-0884 for assistance or click **Back** to go to the previous page and use the link provided to request a login.
- Select **Download an Install or Update**.
- Select **STIHomePlus**.
- Click **STIHomePlus v.xx.x.xxx**.

- Click **Download**.
- Save the file to a location on the STIHome Plus server.

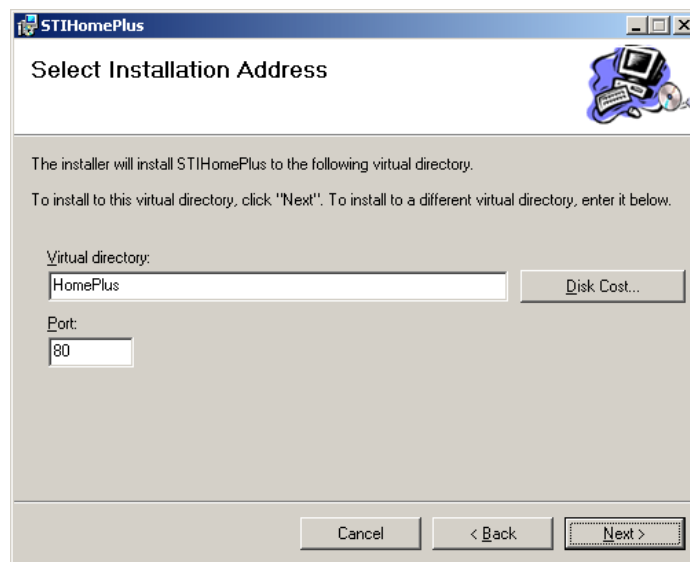
---

## Installing the Application

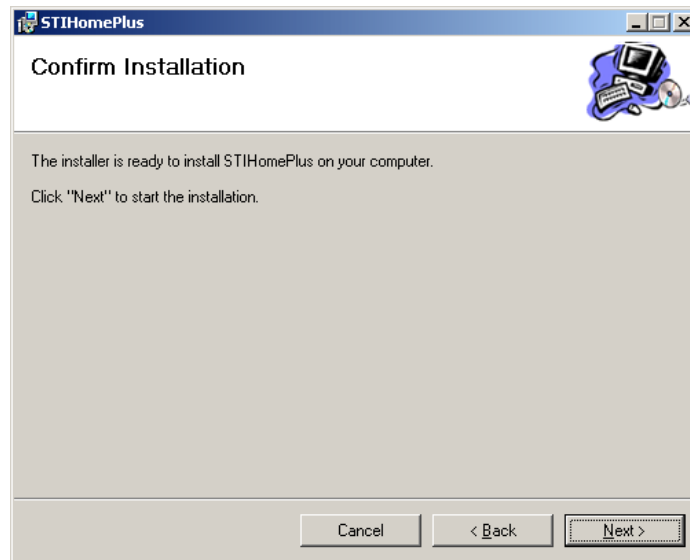
- Double-click on the update file to begin the installation.



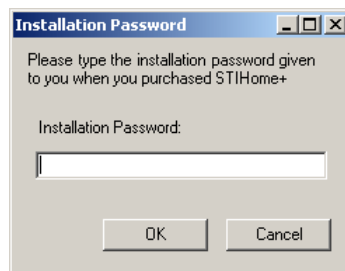
- Click **Next**.



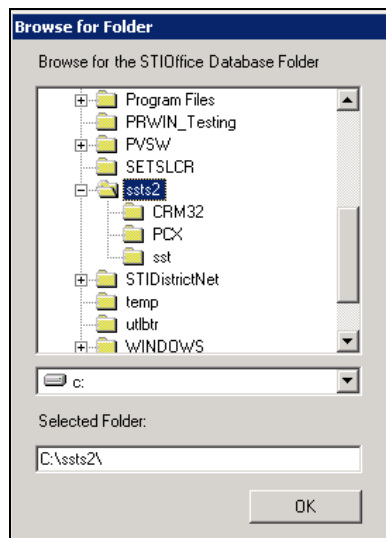
- The *Virtual Directory* field name defaults to *HomePlus*.
- The *Port* number defaults to 80. Port 80 is required and should not be changed.



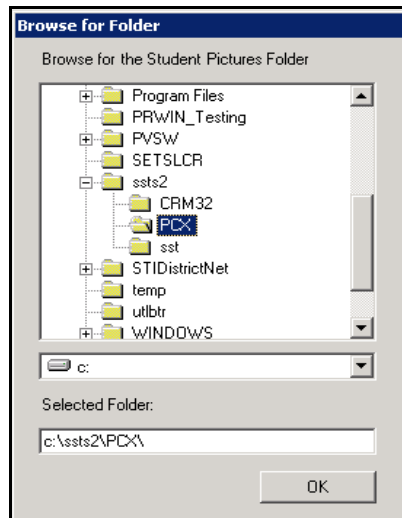
- Click **Next** to confirm the installation.



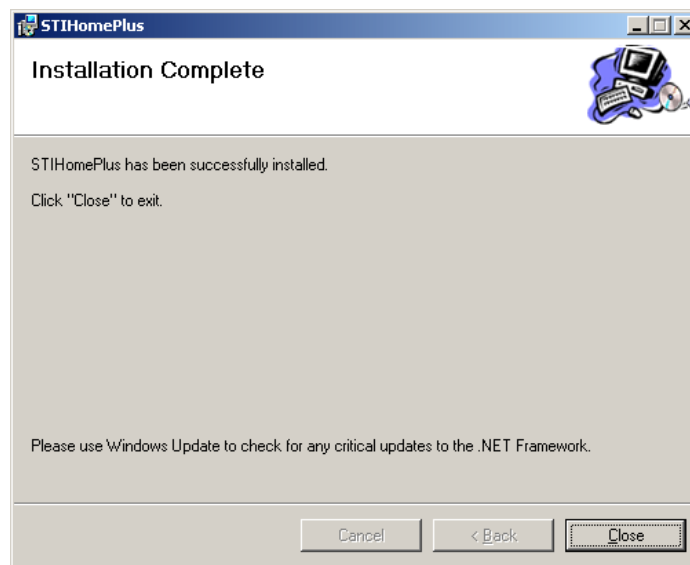
- If the *Installation Password* is not known, please contact STI Support.



- Navigate to the location of the STIOffice Database and click **OK**.



- Navigate to the directory in which student pictures are located and click **OK**.



- Click **Close**.

---

## Configuring STIHome+ to Read the Data

---

**NOTE: If you do not know if you are BTRIEVE or TOPSPEED, please contact STI Support.**

---

**If you are TOPSPEED, and NOT BTRIEVE, do the following:**

- Navigate to *C:\inetpub\wwwroot\HomePlus\*.
- Open the *tps* directory and copy the file called *readtps.dll*.
- Navigate to the *bin* directory.
- Delete the file called *readtps0.dll*.
- Paste the copied file (*readtps.dll*) into the *bin* directory and rename it to *readtps0.dll*.

**If you are BTRIEVE, and NOT Topspeed, do the following:**

- Navigate to *C:\inetpub\wwwroot\HomePlus\*.

- Open the *btr* directory and copy the file called *readtps.dll*.
- Navigate to the *bin* directory.
- Delete the file called *readtps0.dll*.
- Paste the copied file (*readtps.dll*) into the *bin* directory and rename it to *readtps0.dll*.

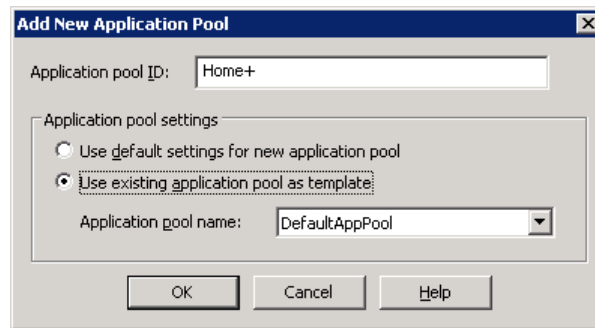
---

**Note:** If you are unable to delete the file *readtps0.dll* from the *bin* directory, you will need to reset IIS before attempting to delete the file. To do this, either press the Windows **Start** button and select **Run** or press and hold the Windows **Start** button and press the **R** key to access the *Run* window. Type *iisreset* and then click **OK**.

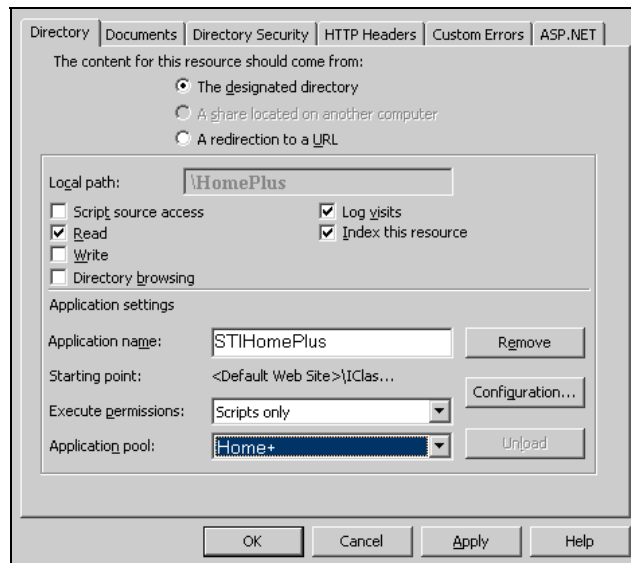
---

## Configuring IIS

Open IIS by typing *inetmgr* in the *Run* window (see Note above) and click **OK**.



- In the IIS management console, expand the plus sign next to the server name.
- Right click on **Application Pools**, then select **New | Application Pool**.
- In the *Application pool ID* field, type *HomePlus*. Select **Use existing application pool as template**. Application pool name should read *DefaultAppPool*. Click **OK**.

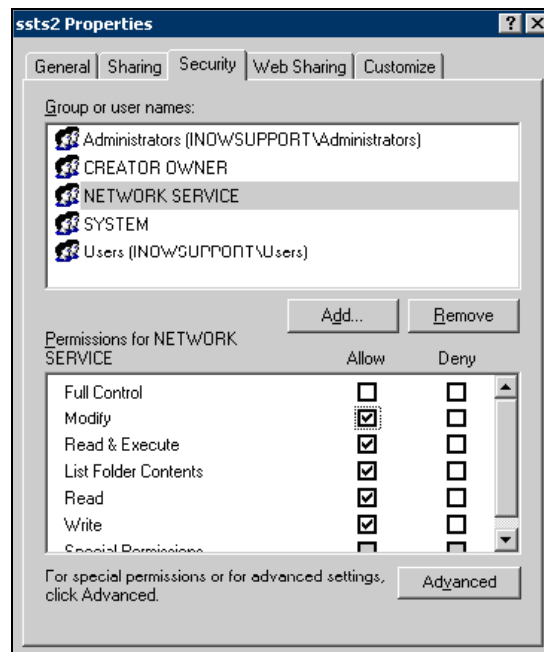


- In the IIS management console, expand the plus sign next to **Web Sites**, then click **Default Web Site**. Right-click on **HomePlus** and then select **Properties**.
- Change the *Application Pool* drop-down to **Home+**. Click **Apply** and then click **OK**. Close IIS.
- Press and hold the Windows **Start** button and press the **R** key to access the *Run* window. Type *iisreset* and then press the *Enter* key.

---

## Setting Permissions

- To set permissions, navigate to the STI Office data directory, typically *SSTS2*, and select **Properties**.
- On the *Security* tab, add the *Network Service* user account and click to *Allow* it *Modify* permissions on the folder. Click **Apply**, and then click **OK**. Repeat this on the *HomePlus* folder, usually located in the *c:\inetpub\wwwroot* directory.



---

## Testing Home Plus

- Open Internet Explorer on the Home Plus server and navigate to *http://localhost/HomePlus*.
- Click on the **Student Services** link. At the login page, enter a student's STIHome+ credentials and then click **OK**. A successful login proves that STIHome+ is working properly.

---

## Accessing Home Plus across your LAN

To access Home Plus on your local area network, open Internet Explorer and navigate to *http://your\_server\_name/HomePlus*. You may type the name or the IP address of the Web server.

---

## Accessing Home Plus outside your network

STI does not support the setup of your STIHome+ Web site outside of the local area network. You will need to contact your Network Technician to proceed with this setup, which may be as simple as setting a NAT rule to point an external IP to your Web server. Your network technician should be able to assist you with this.