

STIClassroom Web – Two-Server Installation

Notes

The instructions below are applicable for a two-server configuration, in which both a Web server and data server are being used. Please contact STI Support for assistance with installation on a Windows 2000 Server.

Server Prerequisites

Web Server

- Windows Server 2003 Operating System
- IIS 6.0 with ASP.NET and FrontPage 2002 Server extensions.
- Microsoft .Net Framework v 1.1.4322.
- Server must meet Hardware Specifications, which are available on the STI Web site.

Data Server

- Windows Server 2000 / 2003, Novell Operating System

Server Preparation

Please refer to the Hardware Specifications on the STI Support Web site at <http://support.sti-k12.com/documentation/hardwarespecs.asp> to ensure the server meets minimum hardware requirements.

The *Application Server Role* for the Web site must be installed and functioning properly.

To add the Application Server Role, perform the following steps:

- Navigate to the *Manage Your Server* wizard under the *Start* menu.
- Click **Add a Role** and select **Application Server Role** from the list.
- During the installation of this role, the user will be prompted to install *ASP.NET* and *FrontPage Extensions*. Choose both of these options.
- Set the password of the ASPNET account as desired.
- In Computer Management, under *Local Users and Groups*, find the account named *ASPNET* and make it a member of the *IIS_WPG* group.

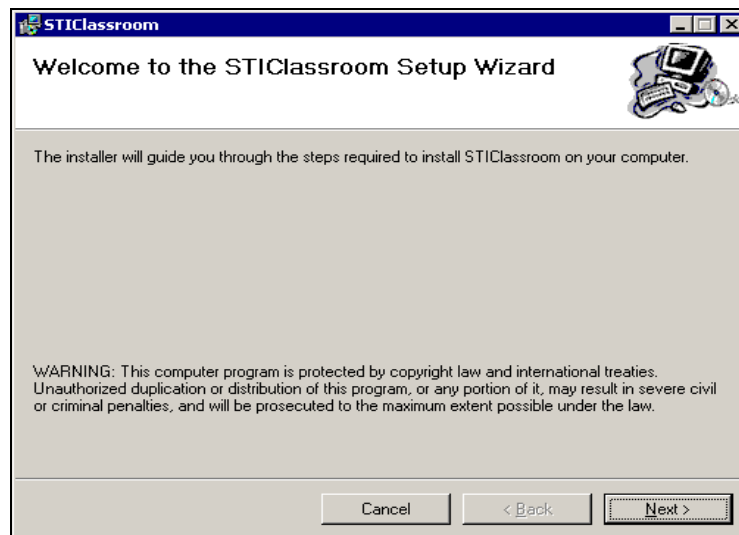
Downloading the Installation File

Download the most current version of STIClassroom Web.

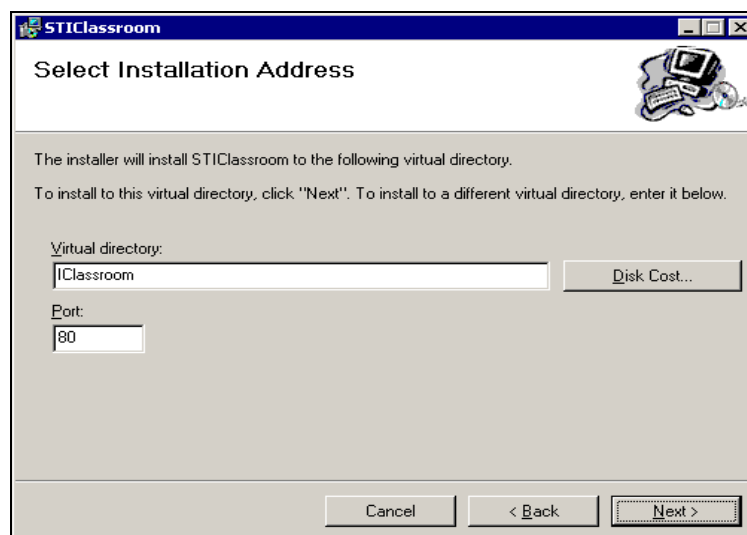
- Go to www.sti-k12.com and click **Support**.
- Click **Updates**. Enter *User Name* and *Password* in the spaces provided. To request a login, contact STI at 1-800-844-0884 for assistance or click **Back** to go to the previous page and use the link provided to request a login.
- Select **Download an Install or Update**.
- Select **STIClassroom Web**.
- Click **STIClassroom Web v.xx.x.xxx**
- Click **Download**.
- Save the file to a location on the STIClassroom Web Server.

Installing the Application

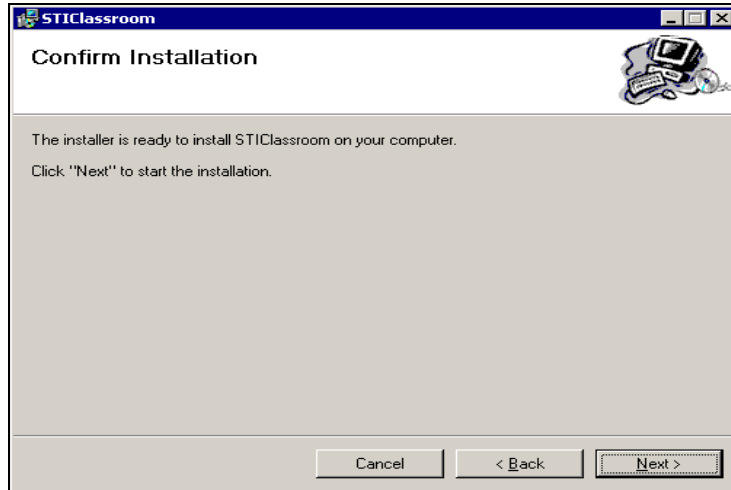
- Double-click on the update file to begin the installation.



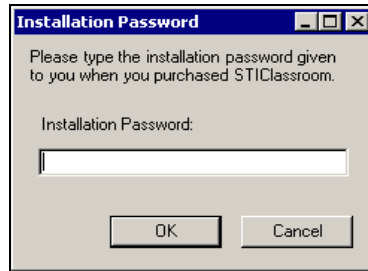
- Click **Next**.



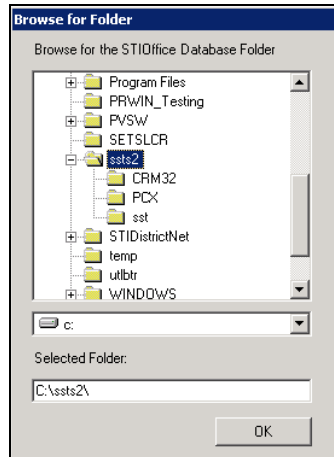
- The *Virtual Directory* field name defaults to *IClassroom*.
- The *Port* number defaults to 80. Port 80 is required and should not be changed.



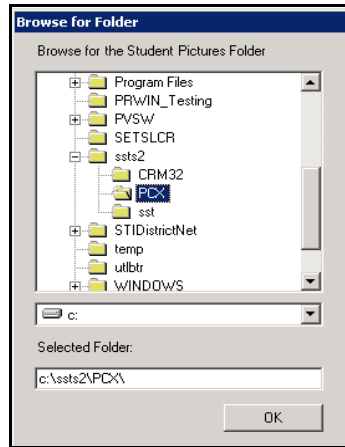
- Click **Next** to confirm the installation.



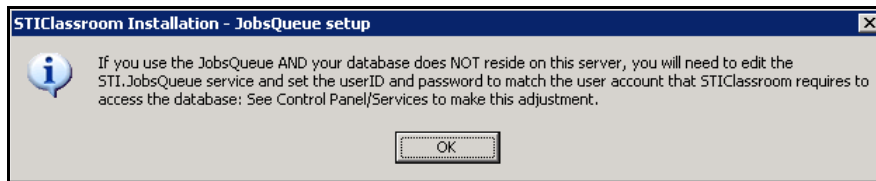
- If the *Installation Password* is not known, please contact STI Support.



- Navigate to the location of the STIOffice Database on the data server and click **OK**.



- Navigate to the directory in which student pictures are located and click **OK**.



- Click **OK**. The installation will complete. Select to **Close** as prompted.

Configuring STIClassroom Web to Read the Data

NOTE: If you do not know if you are BTRIEVE or TOPSPEED, please contact STI Support.

If you are TOPSPEED, and NOT BTRIEVE, do the following:

- Navigate to *C:\inetpub\wwwroot\iclassroom*.
- Open the *tps* directory and copy the file called *readtps.dll*.
- Navigate to the *bin* directory.
- Delete the file called *readtps0.dll*.
- Paste the copied file (*readtps.dll*) into the *bin* directory and rename it to *readtps0.dll*.

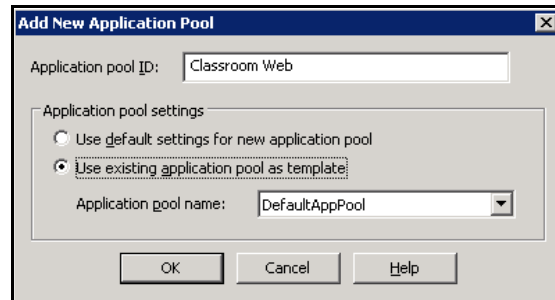
If you are BTRIEVE, and NOT Topspeed, do the following:

- Navigate to *C:\inetpub\wwwroot\iclassroom*.
- Open the *btr* directory and copy the file called *readtps.dll*.
- Navigate to the *bin* directory.
- Delete the file called *readtps0.dll*.
- Paste the copied file (*readtps.dll*) into the *bin* directory and rename it to *readtps0.dll*.

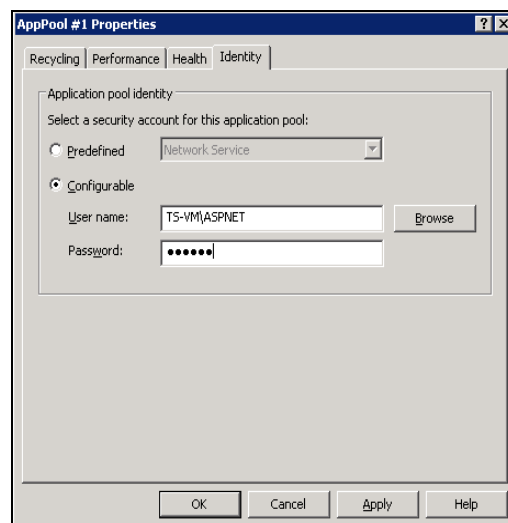
Note: If you are unable to delete the file *readtps0.dll* from the *bin* directory, you will need to reset IIS before attempting to delete the file. To do this, either press the Windows **Start** button and select **Run** or press and hold the Windows **Start** button and press the **R** key to access the *Run* window. Type *iisreset* and then click **OK**.

Configuring IIS

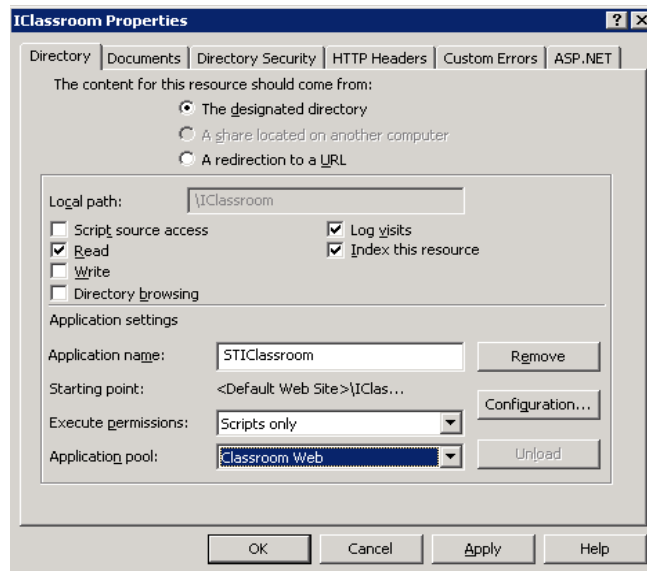
Open IIS by typing *inetmgr* in the *Run* window (see Note above) and click **OK**.



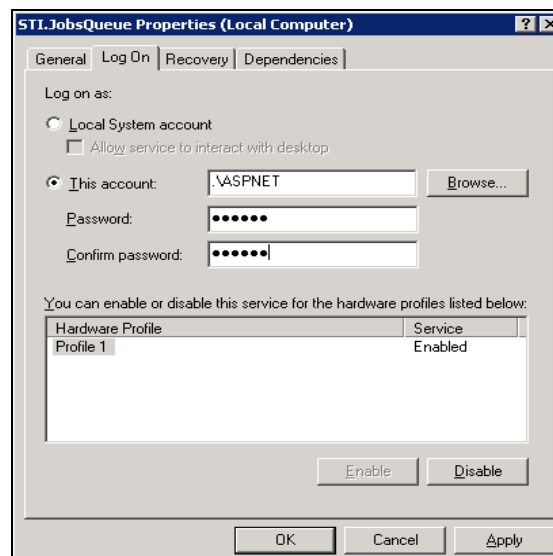
- In the IIS management console, expand the plus sign next to the server name.
- Right click on **Application Pools**, then select **New | Application Pool**.
- In the *Application pool ID* field, type *Classroom Web*. Select **Use existing application pool as template**. Application pool name should read *DefaultAppPool*. Click **OK**.



- In the IIS management console, right click on the application pool **Classroom Web** and then select **Properties**. Click the *Identity* tab and select the **Configurable** option.
- Click the **Browse** button to add the local ASPNET user account. Clear the password field and type in the password of the local ASPNET account. Click **OK**, confirm the password and then click **OK** again.
- In the IIS management console, expand the plus sign next to **Web Sites**, then expand **Default Web Site**.
- Right-click on **Classroom** and select **Properties**.



- Change the *Application Pool* drop-down to *Classroom Web*. Click **Apply** and then click **OK**. Close IIS.
- Press and hold the Windows **Start** button and press the **R** key to access the *Run* window. Type *iisreset* and then press the **Enter** key.



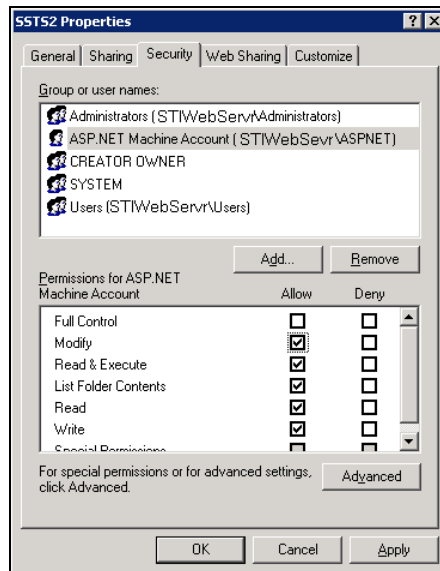
- Access the *Run* window once more as described above and open the Services Console by typing *services.msc*. Press the *Enter* key.
- Find the service named *STI.JobsQueue*. Right-click on this item and select **Properties**. Click the *Log On* tab.
- Select the *This account* option. Click the **Browse** button to add the local ASPNET user account.
- Specify the password of the ASPNET account, then click **Apply**. When prompted, click **OK** again.
- Right click on the service named *STI.JobsQueue* from the services list, then select **Restart**. Close the Services Console.

Setting Permissions

The server on which the STIOffice data resides can either be a *Windows Server 2000/2003* server or a *Novell* server.

Windows Servers

An account called *ASPNET* must exist either locally on the data server or at the domain level. This account's password must match that of the local *ASPNET* account on the STIClassroom Web server. This account must be given *modify permissions* to the STIOffice data directory (typically *SSTS2*).



- To set permissions on a Windows data server, navigate to the STI Office data directory, typically *SSTS2*, and select **Properties**.
- On the *Security* tab, set the ASPNET user account to allow *Modify* permissions on the folder. Click **Apply** and then click **OK**.

Novell Servers

An account called *ASPNET* must exist on the Novell file server. This account's password must match that of the *ASPNET* account on the STIClassroom Web server. This account should be given the same rights/permissions as those of regular STIOffice Users.

On the application server, modify permissions will also need to be set for ASPNET on the *Iclassroom* folder, usually located in *C:\inetpub\wwwroot\Iclassroom*.

Testing Classroom Web

- Open Internet Explorer on the STIClassroom Web server and navigate to *http://localhost/iclassroom*.
- Click on the **Teacher Services** link. At the login page, enter a teacher's STIClassroom credentials and then click **OK**. A successful login proves that STIClassroom Web is working properly.

Accessing Classroom Web across your LAN

To access Home Plus on your local area network, open Internet Explorer and navigate to *http://your_server_name/iclassroom*. You may type the name or the IP address of the Web server.

Accessing Classroom Web outside your Network

STI does not support the setup of your STIClassroom Web site outside of the local area network. You will need to contact your Network Technician to proceed with this setup, which may be as simple as setting a NAT rule to point an external IP to your Web server. Your network technician should be able to assist you with this.